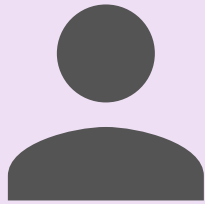


# APHASIA CLINIC

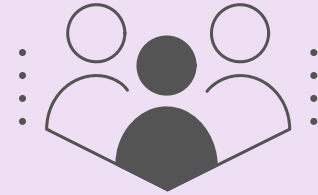


## INDIVIDUAL SESSIONS

May address:

- Expressive and receptive language skills
- Written language
- Speech intelligibility
- Social communication

Sessions are scheduled throughout the week.



## GROUP SESSIONS

The **group treatment** model embraces a positive quality of life and promotes opportunity for social integration. Group sessions are Monday mornings.



800 WEST  
MAIN STREET

ROSEMAN  
BUILDING

WHITEWATER, WI  
53190



## CLINIC FOCUS

The **FOCUS** of this clinic is to provide meaningful opportunities for socialization and functional use of compensatory strategies.



262-472-1301



COMDIS@UWW.EDU



WWW.UWW.EDU/  
COEPS/DEPARTMENTS/  
COMDIS