

Student Success Resource Spotlight

Warhawk Success Conference

February 24, 2023

Dean of Students Office & CARE Team

Andy Browning

Assistant Dean of Students

What is the CARE (Campus Assessment Response and Evaluation) Team and what do we do?

CARE (Campus Assessment Response and Evaluation) Team

- **Why do CARE Teams Exist?**

- We exist because of the shooting at Virginia Tech in 2007, BIT (Behavioral Intervention Teams) are available to provide outreach to students who may be struggling and or a danger to themselves or others

- **Who does the form go to?**

- It goes directly to my inbox and other DOS staff. We follow up as quickly as we can and urgent situations are addressed first. We are not emergency responders, **any immediate emergency should be directed to 911**
- Some will be routed to the Student Life Specialist

- **What is the DOS role?**

- We are the primary facilitators of providing outreach to students. Our role is also to work with faculty or staff to help provide support with difficult situations in and out of the classroom that involve students

- **Are you required to fill out a CARE form?**

- No, you are not required, but it is considered a best practice if you have any concerns about a student. Especially if it is mental health related and pertains to talk or threat of suicide, any potential threats to others

Examples of behaviors that are important to share with the CARE Team

- Students e-mailing you about a recent suicide attempt or thoughts of suicide
- Students appearing to be under the influence
- Students making inappropriate or hateful comments about someone else's identity or specific identity groups
- Students isolating themselves in the classroom or other campus communities
- Students appearing to be disconnected from reality
- Students writing about violence or violent acts (could be a writing assignment)
- Social media posts with threatening language (may be vague or very specific)
- Students disclosing complicated mental health issues
- Being threatened directly or indirectly by a student (swearing at you, saying you are going to "get it", throwing papers in the classroom, slamming doors etc.)

Fostering Success & Independence

Sarah Hessenauer, Social Work

Lori Trimble, Office of Research & Sponsored Programs & Biology

Fostering Success and Independence

Fostering Success and Independence (FSI) is an active partner in creating a supportive college experience where students, regardless of family support, have an equal opportunity to obtain their degree. Through partnership with campus resources we promote independence and academic success.

Who Do We Serve

- Students without traditional family support
- Former Foster Children
- Homeless Students
- Students who have parents who are:
 - Deceased
 - Deployed
 - Incarcerated
 - Deported
 - Institutionalized
 - Otherwise Unavailable (strained relationships, etc.)



Connecting with Students

- Provide Mentoring
 - Attend Events
 - Celebrate Birthdays
 - Distribute Welcome Gift Baskets
 - Distribute Finals Snack Packs
- Connect Individual Students with Resources as Needed
 - Tutoring
 - Food Pantry
 - CARE Team Referrals
 - Housing
 - Campus Employment
 - Warhawk Emergency Fund

Grant Funds and Donations are Expanding FSI

- New space in Andersen Library
- Long-term technology checkout
- FSI stipends to students with unmet financial need
- Provide donated dorm, personal hygiene, and school supplies
- Host prospective students on campus
- Trauma Responsive Interventions training
 - March 10, 8am-noon, my.uww.edu/SignUp
- Open House
 - March 13, noon-2pm, Andersen 2125



Integrated Solution

Dr. Veronica Warren

Director of Counseling Services

University Health & Counseling Services

An integrated solution, addressing needs of the UW Students



SELF HELP & WELLBEING
SUPPORT



 Mantra Health

TELETHERAPY



TELEPSYCHIATRY

 Mantra Health

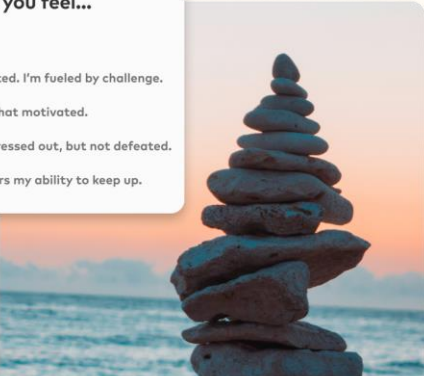
 Didi Hirsch
MENTAL HEALTH SERVICES

CRISIS MANAGEMENT



YOU at College

Get Advice




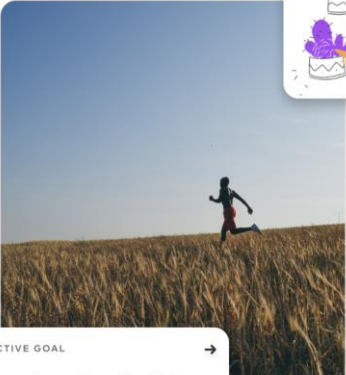
QUESTION 9/17
In general, stress makes you feel...

A. Motivated. I'm fueled by challenge.
B. Somewhat motivated.
C. I get stressed out, but not defeated.
D. It hinders my ability to keep up.

FACTS & TIPS
Your Body on Stress
Sustained high levels of stress can gradually wear down your body. Literally, because it destroys...
STRESS & ANXIETY

STUDENT POSTS
How I'm overcoming my fear of speaking in class

Take Action




LEARN HOW TO...
How to form a habit or routine

ACTIVE GOAL
Keep a sleep diary for 7 days
3/4 Steps
Due in 2 weeks
NEXT STEP
Track times when waking up and falling asleep.

My Goals
In Progress Completed New Goal
4
4 GOALS SET

Connect to Campus



STEP 7/7
Know where to go.
When you need help, we'll point you there. Why not bookmark any resources you'd like to explore later?

Community Counseling Center

Experiential Learning Center

HELP IN CRISIS
Reach out for help
Mental Health Crisis Intervention
Call 202-555-0173
Concerned about another student?
Tell someone or use the [online form](#)

- Aims to be the digital front door to access a wide variety of resources and services offered through the university

Your Mantra Health Program

Therapy Referral Pathways

- ✓ UHCS Referral

Psychiatry Referral Pathways

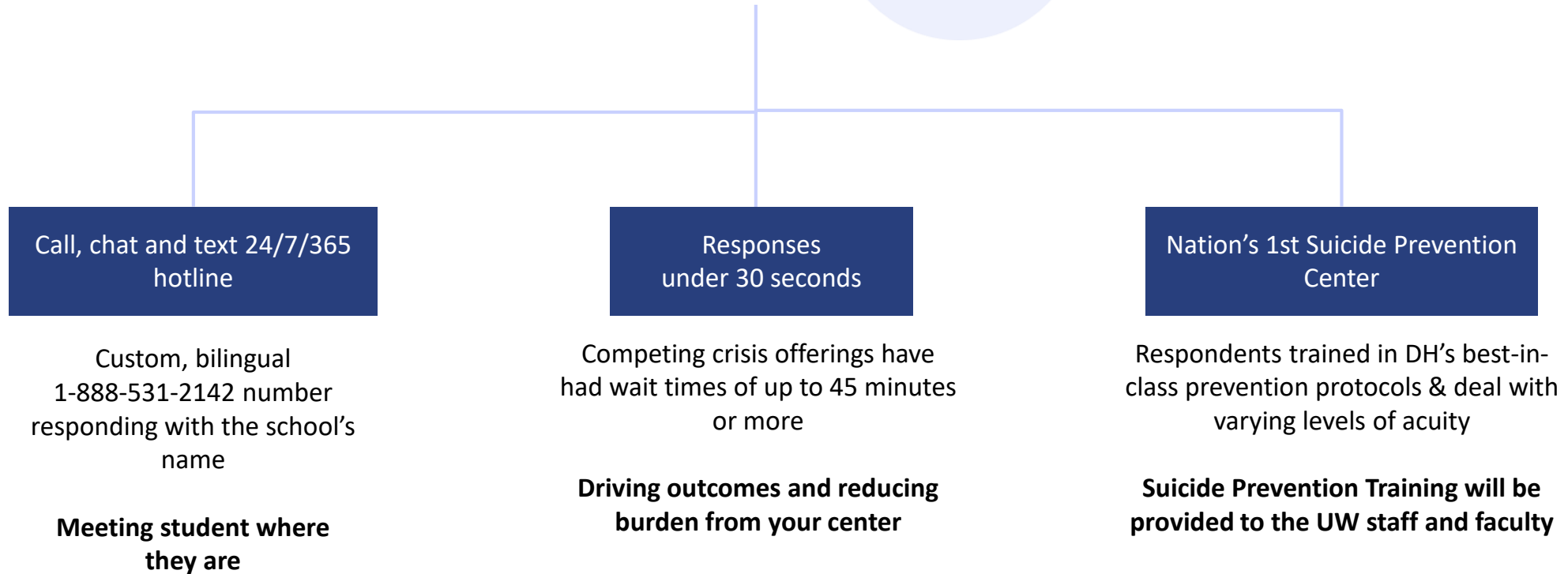
- ✓ UHCS Referral

24/7 Crisis (Unlimited)

- ✓ Call
- ✓ Chat
- ✓ Text



UW Whitewater Support 24/7



Warhawk Emergency Fund

Supporting retention and graduation by providing emergency funding for living expenses

Arden Bubula (they/them)

Graduate Assistant



University of Wisconsin
Whitewater

Warhawk Emergency Fund

Whom we serve

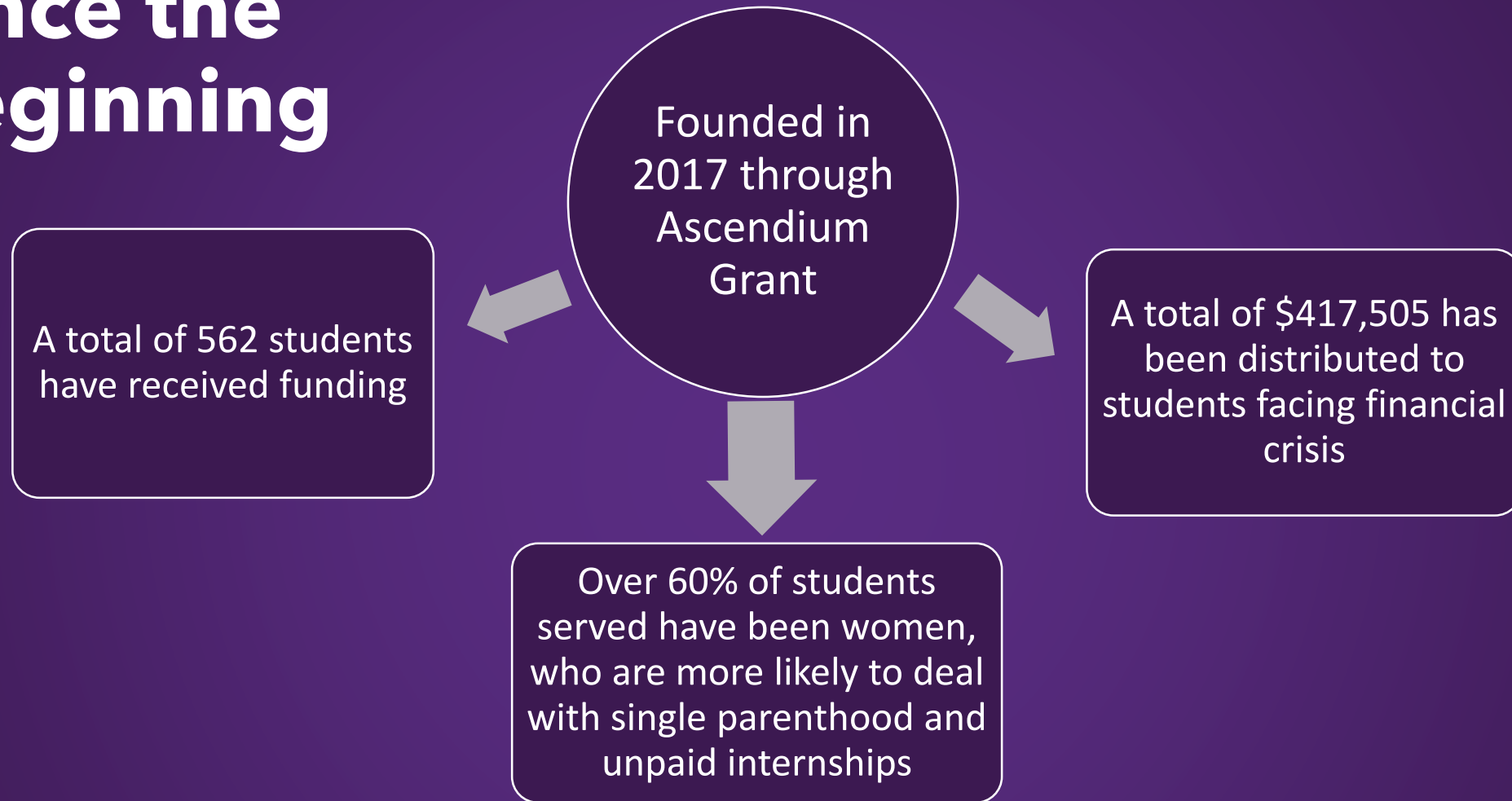
- Enrolled undergraduates
- Primarily low-income students (median EFC <\$1000)
- Disproportionately
 - URM
 - Students with disabilities
 - Student parents
 - Women
 - Unpaid interns

What we provide

- Rent
- Car repairs
- Utilities
- Medical/Dental
- Food cards
- Gas cards
- ~~Car payments, tuition, credit cards, phone bills~~



Since the Beginning



Warhawk Success in 2022

93% of WEF students graduated or stayed enrolled

46% of students served belong to minoritized racial and ethnic groups

During the gas price spike WEF responded by providing 23 students with gas cards

Nearly 50% of total awarded funding went towards housing costs, serving 37 students

How Students Apply

1. Student submits an application here:
https://uwwhitewater.co1.qualtrics.com/jfe/form/SV_dm3gP00Mm47WWUu
2. They provide documentation and additional context to explain their need(s)
 - Most important is their personal narrative
3. Financial aid information is gathered and eligibility is assessed
4. Any missing pieces are acquired (documentation, narrative details, etc.)
5. Application is sent to our 3-person decision committee
6. Student is informed of the committee's decision
7. WEF staff coordinate with the student on bill payment

Student Activities & Involvement

Aaron Broadwater

Program Specialist - Development

Student Activities & Involvement

SAI Mission:

"Student Activities & Involvement: We partner to cultivate culture and connection for an active experience for Warhawks and beyond. Through developing the individual and fostering community, students learn and practice skills and behaviors to be exceptional professionals that succeed."

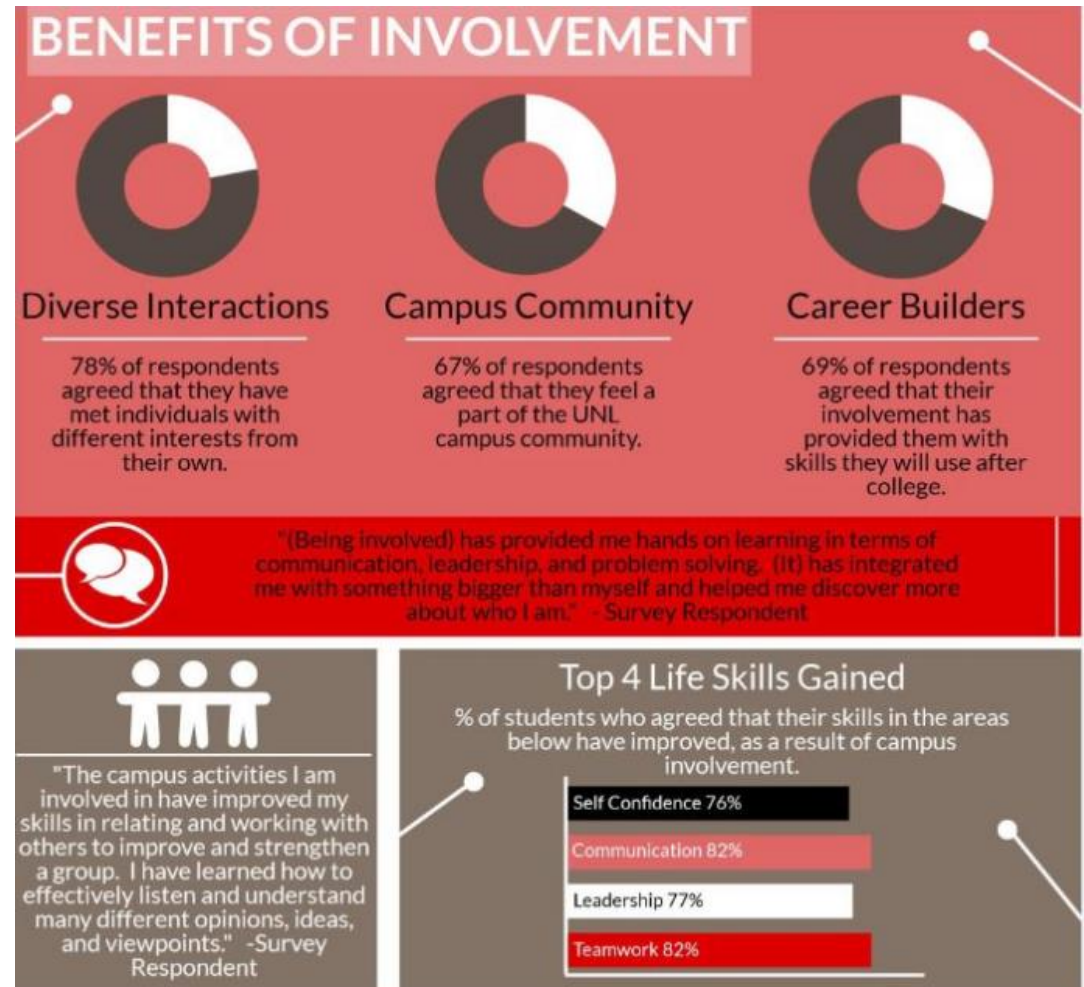
- Community Building
- Student Orgs
- Educational programming
- Involvement
- ULEAD
- Greeks
- Warhawk Ambassadors
- Service
- WCC
- Tradition Event (Homecoming, Involvement Awards)
- UC Live



Involvement

Studies have shown that college student involvement is **positively related to academic performance, cognitive development, well-being, leadership and multicultural awareness.**

- 187 Student Orgs (Training, Org Recognition, Assistance)
- Semesterly Involvement Fair
- ULEAD
- Homecoming Steering Committee
- Greek Life
- Service Opportunities
- Summer Retreats
- Annual UWW Leadership Summit



Warhawk Connection Center

WCC Goals-

- Foster higher levels of collaboration
- Build a closely connected relationship
- Establish & maintain a safe, inclusive, and open space
- CSC/Chancellor Advisory Council meetings & events
- Gain more support from resident orgs (Event attendance, marketing support, ext.)

WCC Key Components-

- Wellness Wednesday's
- Org Recognition
- Post Event Thoughts
- WCC Org Marketing Support
- WCC Programming Events

WCC Events:

- Cultural Heritage Programs
- Fireside Chats
- Professional Development Programs
- Diversity & Inclusion Programs

Greek Life

- **21 Fraternities & Sororities:**
 - National Pan-Hellenic Council
 - 6 Chapters
 - Interfraternity Council
 - 9 Chapters
 - Panhellenic Council
 - 8 Chapters
- 1 Honor Society: Order of Omega
- 4 Professional Staff Members
- 1 Graduate Assistant
- 1 Undergraduate Greek Intern



UC Live



The graphic features the 'UC Live' logo at the top center, with 'UC' in large white letters and 'Live' in a smaller, teal, cursive font. Below the logo, the graphic is divided into three vertical sections. The left section contains a microphone icon and text about various performers and a weekly event. The middle section features social media icons for Facebook, Instagram, and TikTok, along with text about following for event schedules and free activities. The right section includes a clapperboard icon and text about movie screenings in the Summers Auditorium.

UC Live

**COMEDIANS • MUSICIANS
MAGICIANS • HYPNOTISTS
AND MUCH MORE!**

UNIVERSITY CENTER
DOWN UNDER
THURSDAYS AT 7:00 PM
FREE!

**FOLLOW US ON
SOCIAL MEDIA FOR
EVENT SCHEDULES!**

ucliveuww

**FREE ART WORKSHOPS,
BINGO, TRIVIA, AND OTHER
SPECIAL EVENTS!**

MOVIES

IN SUMMERS AUDITORIUM:

THURSDAY: 9 PM
FRIDAY & SATURDAY: 7 PM

FREE WITH UW-W STUDENT ID
\$3 WITHOUT

UC Live provides social programming on a campus wide basis in the University Center, creating vibrant atmosphere that enhances student connection, helps students see themselves in activities as well as options for campus in a non-alcoholic programming.

Rock County Campus Success Resources

Kristin Fillhouer

Associate Dean, College of Integrated Studies

University of Wisconsin Whitewater at Rock County Team

- Belonging, Growth Mindset, Resilience and Trust
- Warhawk Welcome for Students in Housing
- SOAR and Individual Advising
- TRiO Program
- First Year Experience and Bridge Programming

Contact Information

- CARE Team
Andy Browning, Assistant Dean of Students
(262) 472-1533
BrowningAR29@uww.edu
- Fostering Success & Independence
fsi@uww.edu
- Integrated Solution
University Health & Counseling Services
uhcs@uww.edu
- Warhawk Emergency Fund
Dr. Lauren Smith
smithlb@uww.edu
emergencyfund@uww.edu
(262) 472-6237
- Student Activities & Involvement
involvement@uww.edu
(262) 472-6217
- Rock County Success Services
Kristin Fillhouer
fillhouerka22@uww.edu
(608) 758-6541



University of Wisconsin
Whitewater